

ARKANSAS RAZORBACKS

Associate Communications Director Jeri Thorpe | jthorpe@uark.edu | Cell-479-283-3344

'16-'17 SCHEDULE

All: 3-0 | SEC: 0-0 | H: 3-0 | A: 0-0 | N: 0-0 | Ranked: 0-0

NOVEMBER (0-0)	W/L	SCORE
3 OKLA. BAPTIST (EXH)	W	79-32
11 SAM HOUSTON STATE	SECN+ W	71-39
13 LOUISIANA-MONROE	- W	92-46
17 SOUTH DAKOTA	SECN+ W	70-67
21 STETSON	SECN+	7:00 PM
25 vs. Memphis!	-	6:30 PM
26 vs. Nevada/Navy!	-	4/6:30 PM
30 at Tulsa	CST	7 p.m.

DECEMBER (0-0)	W/L	SCORE
3 TEXAS TECH	SECN	3:00 PM
7 BUTLER	SECN+	7:00 PM
11 at Missouri State	-	2:00 PM
18 NORTHWESTERN STATE	SECN+	2:00 PM
21 ORAL ROBERTS	SECN+	1:00 PM
28 HOUSTON BAPTIST	SECN+	7:00 PM

JANUARY (0-0)	W/L	SCORE
1 at Ole Miss*	SECN	4 p.m.
5 MISSISSIPPI STATE*	SECN+	7 P.M.
8 LSU*	SECN+	2 P.M.
12 at Texas A&M*	SECN+	7 p.m.
15 at Alabama*	SECN	4 p.m.
19 VANDERBILT*	SECN+	7 P.M.
23 MISSOURI*	SECN	6 P.M.
29 at LSU*	SECN	1 p.m.

FEBRUARY (0-0)	W/L	SCORE
2 GEORGIA*	SECN+	7 P.M.
5 SOUTH CAROLINA*	ESP2	1 P.M.
9 at Florida*	SECN+	6 p.m.
12 at Missouri*	SECN	5 p.m.
16 KENTUCKY*	SECN+	7 P.M.
19 at Tennessee*	SECN	2 p.m.
23 at Vanderbilt*	SECN+	7 p.m.
26 AUBURN*	SECN	2 P.M.

MARCH (0-0)	W/L	SCORE
1-5 SEC Tournament	SECN/ESPNU/ESP2	TBA

! - Nugget Classic (Reno, Nevada)
 * - Southeastern Conference Game
 All home games played in BWA (19,200)
 All times central and subject to change.

GAME 4 | ARKANSAS (3-0 | 0-0) VS. STETSON (4-0 | 0-0)

RAZORBACKS

Head Coach: Jimmy Dykes
 @CoachJimmy Dykes
 At Arkansas: 33-32 (3)
 Career Record: 33-32 (3)
 W/L Streak: Win 3



HATTERS

Coach: Lynn Bria
 School Record: 155-107 (9)
 Career Record: 308-320 (22)
 W/L Streak: Win 4

SERIES INFO

All Time: Arkansas leads 1-0 \\ Fayetteville: 1-0 \\ Deland: 0-0 \\ Neutral: 0-0

MEDIA INFO

Radio: PxP: Phil Elson \\ Analyst: Erin Gatling
 LR - KABZ-FM-103.7 \\ Fayetteville - KOSM-FM-92.1 \\ Ft. Smith - KFPW-AM-1230/FM-94.5 \\ Rogers - KURM-AM-790/FM-100.3
 TV: SEC Network Plus \\ PxP: Alex Perlman \\ Analyst: Simeon Hinsey \\ http://es.pn/2frE3XJ
 Digital Stats: Arkansas.Statbroadcast.com

WHAT WE ARE TALKING ABOUT

- ▶ Arkansas faces Stetson for just the second time in school history, winning the only previous meeting in Fayetteville during the 2008-09 season.
- ▶ Stetson is the second of four Arkansas non-conference opponents, and 14 opponents overall, that played in the postseason in 2015-16.
- ▶ Arkansas leads the SEC and ranks 11th nationally in turnover margin (+1.67 turnovers/game) and also ranks second in the SEC and fourth nationally in turnovers, committing just 10.0 turnovers per game.
- ▶ Arkansas ranks third in the SEC in steals (11.3 steals/game) and fourth in the SEC in turnovers forced (21.67 turnovers/game).
- ▶ Nine different players saw action and eight different players scored in the contest for the Razorbacks.
- ▶ Jessica Jackson and Alecia Cooley have scored in double figures in each of the first three games this season.
- ▶ Briunna Freeman (12 points vs. ULM) and Jailyn Mason (10 points vs. South Dakota) scored in double figures for the first times in their careers in each of the last two games.
- ▶ Briunna Freeman and Malica Monk both had career highs with five steals and four steals, respectively, as part of a defensive effort that swiped 12 steals and forced 21 turnovers against South Dakota.
- ▶ Arkansas forced two shot-clock violations with both coming in the first quarter. The Razorbacks had forced only one shot-clock violation through the first two games.
- ▶ Arkansas out-rebounded South Dakota 33-21. Arkansas also grabbed 17 offensive rebounds, compared to 18 defensive rebounds for South Dakota.
- ▶ Arkansas improves to 3-0 for the second time in three season under head coach and for the first time since the 2014-15 season, when the Razorbacks advanced to the Round of 32 in the NCAA Tournament.
- ▶ Arkansas improves to 22-10 in home games, including 14-5 in nonconference home games, under head coach Jimmy Dykes.
- ▶ Arkansas snapped South Dakota's eight-game winning streak, the second-longest in the nation.
- ▶ Arkansas has led for 109:42 of 120:00 minutes played this season. Arkansas has been tied for just 3:17 and has trailed for just 7:01 this season.

LAST GAME'S STARTERS



POINTS
15.7
REBOUNDS
7.0
3PT%
50.0
BLOCKS
1

Jessica JACKSON
 #00 | SR | F | 6-0 |
 @JESSJACK_00



POINTS
6.3
REBOUNDS
2.0
ASSISTS
9

Jailyn MASON
 #4 | FR | G | 5-9 |
 @JAIMASON14



POINTS
6.3
REBOUNDS
5.3
ASSISTS
6

Bailey ZIMMERMAN
 #22 | SO | F | 6-0 |
 @Bailey_Ann22



POINTS
12.3
REBOUNDS
4.7
BLOCKS
6

Alecia COOLEY
 #35 | SR | C | 6-3 |
 @Lecia_Rozay



POINTS
11.0
REBOUNDS
3.0
ASSISTS
9

Malica MONK
 #3 | SO | G | 5-8 |
 @TheRealMalica

OPPONENTS

Brianti Saunders
 #10 | SR | G | 5-4
 PPG: 16.0 | RPG: 2.8

Brittney Chambers
 #30 | SR | C | 6-4
 PPG: 13.3 | RPG: 1.5

Myka Johnson-Matthew
 #12 | SO | G | 5-10
 PPG: 9.8 | RPG: 3.0

Breana Bey
 #23 | SR | F | 5-9
 PPG: 13.0 | RPG: 8.0

Sarah Sagerer
 #01 | JR | F | 6-3
 PPG: 11.5 | RPG: 10.8



JESSICA JACKSON
6-3 | F | SR | Jacksonville, Ark.



AALIYAH WILSON
5-10 | G/F | FR | Muskogee, Okla.



MALICA MONK
5-5 | G | SO | N. Little Rock, Ark.



KEIRYN SWENSON
6-1 | G/F | SO | Wichita, Kan.



KIARA WILLIAMS
6-1 | F/C | FR | Little Rock, Ark.



BRIUNNA FREEMAN
5-9 | G | SO | Pelham, Ga.



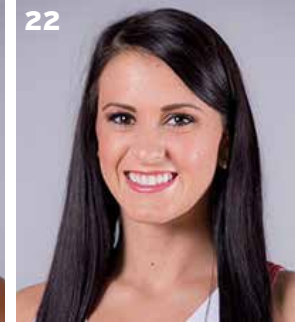
JAILYNE MASON
5-9 | PG | FR | Mason, Ohio



SYDNEY STOUT
6-0 | F | FR | Bixby, Okla.



DEVIN COSPER
5-10 | G | JR | Coffeyville, Kan.



BAILEY ZIMMERMAN
6-0 | G/F | SO | St. Vincent, Ark.



JORDAN DANBERRY
5-8 | G | SO | Conway, Ark.



TATIYANA SMITH
6-3 | C | SR | Plano, Texas



ALECIA COOLEY
6-4 | C | SR | Evanston, Ill.



YASMEEN RATLIFF
6-5 | C | FR | Alpharetta, Ga.



JIMMY DYKES
Arkansas, 1985 | 3rd Season



TARI CUMMINGS
Oklahoma State, 2003 | 6th Season



TOMMY DEFFENBAUGH
Drury College, 1985 | 2nd Season



CHENEL HARRIS
Kent State, 2010 | 1st Season

ROSTER SUPERLATIVES

BY YEAR	BY STATE	BY POSITION	PRONUNCIATION GUIDE
SR -----5 Jackson, Smith, Cooley	Arkansas -----5	Guard -----5 Monk, Freeman, Mason, Cospere, Danberry	Aaliyah ----- uh-LEE-uh
JR -----1 Cospere	Jackson, Monk, Williams, Zimmerman, Danberry	Guard/Forward -----3 Wilson, Swenson, Zimmerman	Malica ----- mal-l-ka
SO -----5 Monk, Swenson, Freeman, Zimmerman, Danberry	Illinois -----1 Cooley	Forward -----3 Jackson, Williams, Stout	Keiryn ----- KEER-rynn
FR -----5 Wilson, Williams, Mason, Stout, Ratliff	Georgia -----2 Freeman, Ratliff	Center -----3 Smith, Cooley, Ratliff	Kiara ----- key-ARE-uh
	Kansas -----2 Swenson, Cospere		Briunna ----- BRE-uh-nah
			Jailyne ----- JAY-lynn
			Tatiyana ----- tah-tee-yah-nah
			Alecia ----- uh-LEE-c-uh
			Yasmeen ----- yas-MEAN

Tari ----- TAR-e
Deffenbaugh ----- DEFF-uh-baugh

THIRD SEASON FOR JIMMY DYKES

Since Jimmy Dykes took over as head coach (2+ seasons), Arkansas has:

- ▶ Won 33 games
- ▶ Reached the second round of the NCAA Tournament (2014-15)
- ▶ Reached the third round of the SEC Tournament (2014-15)
- ▶ Had an All-SEC First-Team selection (Jessica Jackson, 2015-16)
- ▶ Defeated six ranked teams (three 2015 and 2016)
- ▶ Had eight players named to the SEC Academic Honor Roll and 25 to the Athletics Department Academic Honor Roll
- ▶ For just the third time under head coach Jimmy Dykes, Arkansas won when allowing its opponent to shoot 45 percent or better from the floor, when South Dakota shot 56.8 percent in a 70-67 loss.
- ▶ For just the fifth time under head coach Jimmy Dykes, Arkansas won when trailing at halftime, erasing a 28-27 halftime deficit in a 70-67 win over South Dakota on Thursday.

STORYLINES

#BeArkansas

#BeArkansas - We keep the players who fit our program's needs home as well as show other great players what it means to represent the Razorbacks

- ▶ Five in-state players
- ▶ Five newcomers had offers from several other schools but chose Arkansas because of the coaching staff, the current players and the university
- ▶ Fayetteville No. 1 In Best Value. More: <http://bit.ly/2emfca0>.
- ▶ Be Relentless...Be Hard To Guard...Be the team no one wants to play

Expectations

Dykes has high expectations for this season. He has nine returners and five newcomers who will impact the team from day one.

- ▶ Return 77.9% of our scoring including our top three scorers (Jackson, Cospers, Danberry)
- ▶ Return 70.3% of our rebounding including three of the top four (lost Melissa Wolff)
- ▶ Nine returning players and five newcomers including ESPN No. 30 Aaliyah Wilson

Awards \ Honors \ Goals

Jessica Jackson returns for her senior season as just the fourth player in program history to earn All-SEC First Team honors. Her goal is to elevate her game and get drafted by the WNBA at the end of the year.

Newcomer Aaliyah Wilson is just the second McDonald's All-American to sign with Arkansas out of high school. Expectations are high for this freshman.

Building a Strong Foundation

Jimmy Dykes is building a strong foundation. The goal is to win but he won't sacrifice the process. Academics, work ethic and attitude will impact playing time as much as a player's shooting percentage.

- ▶ Getting players who fit our style on and off the court
 - ▶ Getting things done in the classroom - six consecutive semesters above a 3.0 GPA
- Increasing our community service outreach

DEFENSE DEFINES US

- ▶ Arkansas leads the SEC and ranks 9th nationally in turnover margin (+11.67 turnovers/game) and also ranks first in the SEC and third nationally in turnovers, committing just 10.0 turnovers per game.
- ▶ Arkansas ranks third in the SEC in steals (11.3 steals/game) and in the SEC in turnovers forced (21.67 turnovers/game).
- ▶ Scoring defense (50.7 ppg, 4th SEC, 28th nationally)
- ▶ Field-goal percentage defense (32.9, 5th, 52nd)

HOME SWEET HOME

- ▶ Arkansas is 249-96 in 24 seasons in Bud Walton
- ▶ Jimmy Dykes is 23-10 in Bud Walton (8-6/11-4/3-0)

JACKSON AMONG THE SEC LEADERS

Jessica Jackson ranks in the top-5 in several categories among the active leaders in the SEC

- ▶ 1. Scoring with 1486 points
- ▶ 1. Field Goals Made with 510
- ▶ 1. 3-Point Field Goals Made with 160
- ▶ 3. Rebounding with 585 boards
- ▶ 3. Blocks with 112

ACTION JACKSON

- ▶ Jessica Jackson was the second fastest player in program history to reach 1,000 career points.
- ▶ She was the 19th player in program history to score at least 1,000 career points and grab at least 500 career rebounds reaching that milestone at LSU in 2016.
- ▶ Jackson became just the seventh player to score at least 1,000 career points, grab at least 500 rebounds and have at least 100 career blocks at Auburn as a junior

SEEING DOUBLE

DOUBLE FIGURE GAMES

Jessica Jackson (79/23)	Times	20+
2013-14	25	8
2014-15	26	5
2015-16	25	8
2016-17	3	1

Devin Cospers (14)	Times
2015-16	14
2016-17	TBA

Jordan Danberry (11)	Times
2015-16	10
2016-17	1

Alecia Cooley (10)	Times
2015-16	7
2016-17	3

Malica Monk (5)	Times
2015-16	3
2016-17	2

Keiryn Swenson (1)	Times
2015-16	3

Jailyn Mason (1)	Times
2016-17	1

Briunna Freeman (2)	Times
2016-17	2

DOUBLE-DOUBLES

Jessica Jackson

Pts	Reb	Opponent	Date
16	10	Florida	1-29-16
15	12	at Butler	12-13-15
13	10	Southeastern La.	11-13-15
20	13	SHSU	11-15-15
19	11	at Missouri	3-1-15
17	13	LSU	2-22-15
14	11	at Alabama	2-1-15
18	10	No. 5/8 Texas A&M	1-4-15
19	12	Savannah State	11-16-14
18	11	Tennessee Tech	12-20-13
23	10	at Florida	1-9-14
31	10	Ole Miss	1-19-14
19	12	Auburn	2-2-14
21	11	Ole Miss (SEC)	4-5-14

Alecia Cooley

Pts	Reb	Opponent	Date
11	10	Florida	1-28-16
12	10	No. 24 Missouri	1-17-16
12	10	Missouri State	12-2-15

Jordan Danberry

Pts	Reb	Opponent	Date
12	10	Alabama	2-18-16

JACKSON NUMBERS

- ▶ Scored in double figures in three games (79 career) double figure scoring games
- ▶ Thirteen career double doubles
- ▶ Scored 20+ points 23 times in her career/Once as a senior
- ▶ She has been Arkansas' leading scorer (or tied for the lead) in 2 games this year
- ▶ She has been among Arkansas' leading rebounders in two games this year
- ▶ Jessica Jackson ranks 20th with 585 career rebounds
- ▶ Jessica Jackson ranks eighth with 92 career blocked shots

POINTS/REBOUNDS/BLOCKS

Player	Points	Rebs	Blocks
Shemeka Christon (01-04)	1951	714	162
Delmonica DeHorney (88-91)	1785	641	235
JESSICA JACKSON (14-PRES)	1486	585	112
Sarah Watkins (10-13)	1386	604	201
Stephanie Bloomer (92-95)	1159	691	126
Amanda Holley (82-84)	1154	683	147
Kim Bunge (80-83)	1047	652	116

POINTS

Name (Career)	Yr	Gp	Pts
1. Bettye Fiscus (81-85)	4	112	2,073
2. Shameka Christon (00-04)	4	123	1,951
3. Del. DeHorney (87-91)	4	115	1,785
4. Kimberly Wilson (93-97)	4	120	1,733
5. Shelly Wallace (85-89)	4	119	1,583
6. Wendi Willits (97-01)	4	131	1,574
7. C'eira Ricketts (09-12)	4	129	1,537
8. JESSICA JACKSON (14-PRES.)	3+	94	1,486
9. Christy Smith (94-98)	4	111	1,459
10. Karyn Karlin (96-00)	4	111	1,441

2016-17 NEWCOMERS

FRESHMAN VIDEOS

Get to know our newcomers in their own words. Watch Now!

MASON - bit.ly/MasonShoe

RATLIFF - bit.ly/YasRatliff

STOUT - bit.ly/GTKStout

WILLIAMS - BIT.LY/KIARAWILLIAMS

WILSON - bit.ly/AWilsonHorses

- ▶ Yasmeen Ratliff is the daughter of long-time NBA player Theo Ratliff
- ▶ Ratliff says defense is her strength
- ▶ Kiara Williams grew up in a busy household with two step-brothers, a little sister and little brother, a cousin and two aunts
- ▶ Williams is a big fan of the Marvel superhero movies
- ▶ Jailyn Mason has an Air Jordan shoe collection
- ▶ Check out the photos of Mason's collection here > bit.ly/MasonShoe
- ▶ Aaliyah Wilson has three siblings and a lot of cousins - her grandmother had 16 children
- ▶ Wilson loves to ride horses and has owned a couple of horses

SCORING AND REBOUNDING RETURN

- ▶ Arkansas returns 77.9 percent of its scoring from last year
- ▶ The Razorbacks return their top three scorers from a year ago (Jackson, Cosper, Danberry)
- ▶ The Razorbacks return 70.3 percent of its rebounding including three of the top four from last year
- ▶ In 2016-17 Arkansas is averaging 77.7 ppg and 38.3 rpg
- ▶ Jackson and Cooley are currently the top scorers and are among the top rebounders

A DEEP BENCH - WITH EXPERIENCE

Last season, Arkansas had just three returners who had played minutes for head coach Jimmy Dykes. This year, the Razorbacks return nine players who saw action in games last season. The returners have 290 combined games of experience, 2,367 career points and 1,065 career rebounds prior to the 2016-17 season.

20+ POINT GAMES

- ▶ The Razorbacks played 30 games last year and had three players score 20 or more points in 10 of those contests. Junior Jessica Jackson had eight 20+ point games while sophomore Devin Cosper and senior Melissa Wolff had one each. Jackson has added one 20+ point game in 2016-17.
- ▶ Jackson's 20+ point games over the last two seasons include:
- ▶ 2015-16: 20 vs. Sam Houston State; 24 at South Dakota State; 29 vs. Tulsa; 22 versus Louisiana; 22 vs. Mississippi Valley State; 20 at No. 5 Mississippi State; 25 vs. No. 13 Tennessee; 20 vs. Alabama. **2016-17**: 20 vs. Sam Houston State
- ▶ The one game this season bring her career total to 22 games with 20+ points
- ▶ Arkansas is 1-0 when Jackson scored 20+ in 2016-17

DOUBLE DIGIT SCORING IN THE FIRST HALF IN 2016-17

- ▶ Malica Monk is the first player to score in double figures in the first half of a game with 10 points against Sam Houston State.

STARTING LINEUPS

OPPONENT	GUARD	GUARD	FORWARD	FORWARD	CENTER
OK BAPT (Exh)	Monk	Mason	Jackson	Zimmerman	Cooley
SHSU	Monk	Mason	Jackson	Zimmerman	Cooley
ULM	Monk	Mason	Jackson	Zimmerman	Cooley
S DAKOTA	Monk	Mason	Jackson	Zimmerman	Cooley
STETSON					
vs. Memphis					
vs. Nevada/Navy					
at Tulsa					
TEXAS TECH					
BUTLER					
at Mo State					
NSU					
ORU					
HBU					
Ole Miss					
MISS STATE					
LSU					
Texas A&M					
Alabama					
VANDERBILT					
MISSOURI					
LSU					
GEORGIA					
S CAROLINA					
Florida					
Missouri					
KENTUCKY					
Tennessee					
Vanderbilt					
AUBURN					
SEC Tournament					

ON THIS DATE

Nov. 21 (8-1)					
1978	Arkansas	79	Tulsa	76	
1995	#9 Arkansas	71	#11 Colorado	73	Fayetteville
1997	Arkansas	93	Providence	82	
1998	Arkansas	70	Louisville	61	
2003	Arkansas	81	Wichita St.	72	
2004	Arkansas	86	Centenary	52	Fayetteville
2005	Arkansas	99	Memphis	53	
2008	Arkansas	78	SMU	69	
2010	Arkansas	77	MTSU	50	Fayetteville

WE ARE FAMILY

Several Razorback players hail from large families. Check out some of the family sizes here.

Briunna Freeman	9
Brittany, James, Leonard, Duntrez, Rhaheem, Javell, Shambrika, Kendra, Brandon	
Jessica Jackson	7
Chris, Adrian, Asia, Jennifer, Kailyn, Cedric, Khylan	
Alecia Cooley	7
Mia, Cojuan, Janava, Cheri, Laurie, Amber, Jasmine	
Jordan Danberry	5
Shaun, Asia, Trinity, Phoenix, Brian	
Yasmeen Ratliff	5
Stacia, Alexis, Sasha, Adonis, Darius	
Kiara Williams	4*
Jasmine Davis, Rodney Davis, Deunte Davis, Deundre Davis	
Bailey Zimmerman	3
John Paul, Jordan, Brooke	
Malica Monk	2
Mark, Mason	
Keiryn Swenson	2
Kameron, Konner	
Tatiana Smith	2
Christopher, the late Kevin Smith	
Aalyah Wilson	2**
Devante, Alexis	
Devin Cosper	1
Sierra	
Sydney Stout	1
Savanna	
Jailyn Mason	14***
Roman, Amari, Elijah, Isaiah	

*Williams also grew up with 2 aunts and a cousin in the household

**Grandmother had 16 kids so she had a lot of cousins around

***Has 14 siblings and is closest with the ones who are listed

SPEAKING OF FAMILY

Bailey Zimmerman is a cousin of Arkansas men's basketball assistant coach Matt Zimmerman.



2016 ARKANSAS STUDENT-ATHLETES

(L-R): Bailey Zimmerman (St. Vincent), Malica Monk (N. Little Rock), Jessica Jackson (Jacksonville), Jordan Danberry (Conway), Kiara Williams (Little Rock)

In 2015-16

- Arkansas had six players score in double figures in the first half 13 times last year
- One game, at Auburn, two players were in double figures in the first half
- The list includes Jessica Jackson in six games (at Auburn-10, at LSU-11, at Mississippi State-13, vs. Sam Houston State-13, Vanderbilt-11, Alabama-12)
- Devin Cosper in two games (at Auburn-10, vs. Texas-11)
- Melissa Wolff (vs. Missouri-11, vs. New Orleans-18)
- Alecia Cooley (vs. Mississippi Valley State-12)
- Jordan Danberry (vs. Oregon State-11)
- Kelsey Brooks (Florida-12)

YOUNGEST TO YOUNG WITH EXPERIENCE

▶ Arkansas welcomed eight newcomers in 2015-16 and was the youngest team in the SEC and fifth-youngest in the country in terms of current players with minutes under the current head coach.

▶ This year, the Razorbacks return nine of 12 players from a year ago and have two seniors on the roster making them much more experienced than a year ago.

TOUGH SCHEDULE IN 2016-17

The SEC is always a tough place to play and this year is no exception

- Arkansas faces five ranked (as of 11/14/16) opponents in a row
- The stretch includes No. 4 South Carolina, No. 19 Florida, No. 25 Missouri, No. 15 Kentucky and No. 13 Tennessee
- Three of those five games are on the road
- In addition to those five games, Arkansas faces two other SEC teams who are ranked and two more who are receiving votes

- The SEC sent nine teams to the NCAA Tournament and one other to the WNIT last season

It's not just the SEC either. The Razorbacks have put together a non-conference schedule that should allow the team to find itself while getting tough for league play

- Arkansas hosts WNIT Champion South Dakota
- The Razorbacks travel to Missouri State who took part in last year's NCAA Tournament

A MAJOR ACCOMPLISHMENT

Alecia Cooley	Communication
Devin Cosper	Communication
Jordan Danberry	Business Economics
Briunna Freeman	Psychology
Jessica Jackson	Rec. & Sport Management
Jailyn Mason	Journalism: News/Editorial
Malica Monk	Rec. & Sport Management
Yasmeen Ratliff	Apparel Merchandising/ Product Dev.
Tatiana Smith	Criminal Justice
Sydney Stout	Management
Keiryn Swenson	Accounting
Kiara Williams	Agricultural Business
Aaliyah Wilson	Pre-Physical Therapy
Bailey Zimmerman	Apparel Merchandising/ Product Dev.

STATS & STANDINGS

TEAM	SEC			OVERALL		
	W	L	PCT.	W	L	PCT.
Alabama	0	0	.000	3	0	1.000
ARKANSAS	0	0	.000	3	0	1.000
Auburn	0	0	.000	3	0	1.000
Florida	0	0	.000	3	0	1.000
Ole Miss	0	0	.000	4	0	1.000
Mississippi State	0	0	.000	4	0	1.000
South Carolina	0	0	.000	2	0	1.000
Texas A&M	0	0	.000	3	0	1.000
Georgia	0	0	.000	3	1	.750
Kentucky	0	0	.000	3	1	.750
LSU	0	0	.000	3	1	.750
Tennessee	0	0	.000	3	1	.750
Vanderbilt	0	0	.000	3	1	.750
Missouri	0	0	.000	2	1	.667

SEC & NCAA STATS

CATEGORY (All Games)	SEC*	NCAA
Scoring	4 (81.5)	73
Scoring Defense	4 (42.5)	20
Scoring Margin	3 (+39.0)	27
FG Pct.	4 (.467)	61
FG Pct. Defense	3 (.242)	13
3PT FG Pct	5 (.438)	40
3PT FG Pct Defense	3 (.150)	26
Blocked Shots	T5 (5.0)	19
Turnover Margin	2 (+12.5)	21
Assist/Turnover Ratio	T1 (1.7)	19
3PT FG Made	4 (7.0)	32

INDIVIDUAL

CATEGORY (All Games)	SEC*	NCAA
FT Pct. Malica Monk	5 (.875)	164
3PT FG Pct Jessica Jackson	4 (.667)	68
3PT FGM Jessica Jackson	T3 (3.0)	27
Blocked Shots Alecia Cooley	5 (2.5)	15

*Top five only

SEC SCHEDULE

November

21 (Monday)

Stetson at Arkansas (SECN+)	7:00 p.m. CT
7-Maine at South Carolina	7:00 p.m. ET

22 (Tuesday)

Georgia Southern at Alabama (SECN+)	7:00 p.m. CT
8-Auburn vs Ball State	3:30 p.m. CT
Florida at Arkansas State	6:30 p.m. ET
Indiana State at Missouri (SECN+)	7:00 p.m. CT
7-Saint Peter's at South Carolina	7:00 p.m. ET
Robert Morris at Vanderbilt (SECN+)	11:30 a.m. CT

23 (Wednesday)

8-Auburn vs Marist	6:00 p.m. CT
Morehead State at Kentucky (SECN+)	7:00 p.m. ET
Texas A&M at Little Rock	6:30 p.m. CT

24 (Thursday)

8-Auburn vs West Virginia	6:00 p.m. CT
9-Georgia vs Minnesota	2:00 p.m. ET
10-LSU vs Texas-El Paso	2:15 p.m. CT

25 (Friday)

11-Arkansas vs Memphis	6:30 p.m. CT
Florida at Northwestern	8:00 p.m. ET
9-Georgia vs TBD	TBA
10-LSU vs Kansas State	12:00 p.m. CT
12-Mississippi State vs Oregon	8:00 p.m. CT
9-Missouri vs Creighton	2:15 p.m. CT

ABOUT OUR OPPONENT

STETSON HATTERS

- ▶ Arkansas faces Stetson for just the second time in school history, winning the only previous meeting in Fayetteville during the 2008-09 season
- ▶ Stetson advanced to the second round of the Women's Basketball Invitational, making them one of four teams on Arkansas' non-conference schedule, along with South Dakota (WNIT), Memphis (WNIT) and Missouri State (NCAA), to play in the postseason in 2015-16
- ▶ Stetson has advanced to postseason play in each of the last six seasons, including NCAA Tournament appearances in 2011 and 2013
- ▶ This season the Hatters have wins over Webber International, Valparaiso and Bethune-Cookman.
- ▶ They face Eastern Illinois Saturday, Nov. 19 before coming to Fayetteville
- ▶ Six players average double figures through the first three games played by Brianti Saunder and Brittney Chambers who both average 14.7 ppg
- ▶ Sarah Sagerer averaged 10.3 ppg but leads the team with 10.3 rpg as well
- ▶ Stetson has outscored its first three opponents by an average of 17.7 ppg and outrebounded them at a +6.7 clip

SERIES NOTES

- ▶ This is the second meeting between Arkansas and Stetson
- ▶ Arkansas won the only other meeting 85-44 in Fayetteville in 2008
- ▶ Arkansas had four players in double figures led by Ayana Brereton with 17 points

ARKANSAS AND THE SEC

- ▶ Arkansas' 92 points against ULM is the second most points scored by an SEC team this season
- ▶ The 46-point win margin over ULM is tied for the third-largest win by an SEC team this season
- ▶ Arkansas' 31 free throw attempts against ULM ranks third in the league this season
- ▶ Jessica Jackson's 20 points against SHSU is one of 10 20-point efforts in the SEC this year
- ▶ Alecia Cooley's four blocked shots against SHSU is tied with four other players for the most in a game this year (in the SEC)

ARKANSAS RECORD WHEN ...

.....'16-'17	Dykes
Scoring First.....	2-0.....TBA
Leading at Halftime.....	2-0.....26-8
Trailing at Halftime	1-0.....5-24
Shoots 45% or better.....	1-0.....9-0
Shoots less than 45%.....	2-0.....24-32
Outrebounds opponent.....	2-0.....25-7
Ties opponent rebounds.....	0.....2-3
Outrebounded by opponent	1-0.....5-22
Fewer or same # TO	3-0.....23-20
More TOs than opponent	0.....10-12
Overall.....	3-0.....33-32
Home	3-0.....22-10
Road.....	0-0.....7-17
Neutral.....	0-0.....4-5
Non-conference.....	3-0.....20-13
Non-conference home.....	3-0.....12-4
Non-conference away.....	TBA.....4-4
Non-conference neutral.....	TBA.....4-5
In November	3-0.....11-4
In December	x.....7-6
In January.....	x.....6-11
In February.....	x.....7-7
In March.....	x.....2-4
On Monday	x.....4-1
On Tuesday	x.....-
On Wednesday.....	x.....2-2
On Thursday	1-0.....9-10
On Friday	1-0.....5-3
On Saturday.....	x.....1-1
On Sunday	1-0.....12-15

2016-17 Margin of Victory/Defeat

	1	2	3	4	5	6	7	8	9	10	11-15	16-19	20+
Wins	-	-	1	-	-	-	-	-	-	-	-	-	2
Losses	-	-	-	-	-	-	-	-	-	-	-	-	0

Most First Period Points

2016-17	25	SHSU (11-11-16)
All-Time	27	SELA (11-13-15)
Opponent	25	SDSU (11-18-15)

Most Third Period Points

2016-17	34	ULM (11-13-16)
All-Time	34	ULM (11-13-16)
Opponent	29	at #2 S. Carolina (1-3-16)

Fewest First Period Points

2016-17	25	SHSU (11-11-16)
All-Time	3	#5/6 Texas (12-20-15)
Opponent	6	SHSU (11-11-16)

Fewest Third Period Points

2016-17	15	SHSU (11-11-16)
All-Time	7	at #2 SC (1-3-16)
Opponent	4	LSU (1-21-16)

Most Second Period Points

2016-17	20	ULM (11-13-16)
All-Time	24	SELA (11-13-15)
Opponent	35	at #2 S. Carolina (1-3-16)

Most Fourth Period Points

2016-17	22	SHSU (11-11-16)
All-Time	32	Tulsa (11-23-15)
Opponent	27	Georgia (2-25-16)

Fewest Second Period Points

2016-17	9	SHSU (11-11-16)
All-Time	6*	No. 13 Tenn. (1-14-16)
Opponent	5	#5/6 Texas (12-20-15)

Fewest Fourth Period Points

2016-17	16	ULM (11-13-16)
All-Time	5	#7 Ore. St. (11-28-15)
Opponent	10	#24 Missouri (1-17-16)*

Most First Half Points

2016-17	44	ULM (11-13-16)
All-Time	65	Tenn State (11-27-88)
Opponent	63	Texas (1-9-89)

Largest Margin of Victory

2016-17	46	ULM (11-13-16)
All-Time	79	(108-29) B Wesleyan (2-18-77)
Opponent	54	(28-82) La Tech (11-30-78)

Fewest First Half Points

2016-17	27	South Dakota (11-17-16)
All-Time	11	at Missouri (3-15)*
Opponent	8	Montana State (1-5-03)

*Most Recent

Jump Balls Won

Arkansas	2
Opponent	1

Rebounding Leader

Jackson	3
Swenson	1
Cooley	1

5+ Assists

Mason	1
-------	---

Scored First Points

Zimmerman	2
Mason	1

10+ Points

Jackson	3
Cooley	3
Monk	2
Freeman	2
Swenson	1
Danberry	1
Freeman	2
Danberry	1
Mason	1

Double-Doubles

TBA	x
-----	---

First Off The Bench

Swenson	1
Danberry	1
Freeman	2

Monk

Monk	2
Freeman	2
Swenson	1
Danberry	1
Mason	1

Charges Drawn

Jackson	1
Monk	2

Points Leader

Jackson	3
Cooley	1
Swenson	1

15+ Points

Jackson	1
---------	---

Forced 10-Second

Violations	1
------------	---

3-Point Leader

Jackson	3
Zimmerman	1
Mason	1

20+ Points

Jackson	1
---------	---

Forced Opponent

Shot Clock Violations	3
-----------------------	---

1H Double Figures

Monk	1
------	---



@RazorbackWBB STATISTICS
 ARKANSAS Individual Game-by-Game (as of Nov 21, 2016)
All games



#00 JACKSON, Jessica

Opponent	Date	gs	min	Total		3-Pointers		Free throws		Rebounds				pf	a	t/o	blk	stl	pts	avg	
				fg-fga	pct	3fg-fga	pct	ft-fga	pct	off	def	tot	avg								
SAM HOUSTON STATE	11/11/16	*	27	6-14	.429	3-4	.750	5-7	.714	3	5	8	8.0	3	4	0	1	0	20	20.0	
LA-MONROE	11/13/16	*	23	5-14	.357	3-5	.600	0-0	.000	2	4	6	7.0	2	0	2	0	2	13	16.5	
SOUTH DAKOTA	11/17/16	*	30	5-15	.333	2-7	.286	2-11	.182	3	4	7	7.0	0	2	4	0	1	14	15.7	
Totals			3	80	16-43	.372	8-16	.500	7-18	.389	8	13	21	7.0	5	6	6	1	3	47	15.7

Games played: 3
 Minutes/game: 26.7
 Points/game: 15.7
 FG Pct: 37.2
 3FG Pct: 50.0
 FT Pct: 38.9

Rebounds/game: 7.0
 Assists/game: 2.0
 Turnovers/game: 2.0
 Assist/turnover ratio: 1.0
 Steals/game: 1.0
 Blocks/game: 0.3



@RazorbackWBB STATISTICS
 ARKANSAS Combined Team Statistics (as of Mar 04, 2016)
Conference games



RECORD:	OVERALL	HOME	AWAY	NEUTRAL
ALL GAMES	7-9	6-2	1-7	0-0
CONFERENCE	7-9	6-2	1-7	0-0
NON-CONFERENCE	0-0	0-0	0-0	0-0

#	Player	gp-gs	min	avg	Total		3-Point		F-Throw		Rebounds			pf	dq	a	to	blk	stl	pts	avg			
					fg-fga	fg%	3fg-fga	3fg%	ft-fga	ft%	off	def	tot									avg		
00	JACKSON, Jessica	16-16	522	32.6	88-214	.411	24-78	.308	56-76	.737	20	65	85	5.3	52	3	15	40	15	12	256	16.0		
21	COSPER, Devin	16-15	446	27.9	55-166	.331	15-54	.278	22-36	.611	4	45	49	3.1	27	0	24	44	0	20	147	9.2		
24	DANBERRY, Jordan	16-4	308	19.3	42-116	.362	1-12	.083	27-45	.600	14	28	42	2.6	38	1	43	40	1	14	112	7.0		
15	BROOKS, Kelsey	15-10	377	25.1	29-81	.358	17-47	.362	26-36	.722	7	27	34	2.3	29	0	32	27	1	14	101	6.7		
33	WOLFF, Melissa	16-16	507	31.7	37-101	.366	0-2	.000	21-32	.656	41	72	113	7.1	42	0	20	35	7	15	95	5.9		
35	COOLEY, Alecia	16-16	391	24.4	32-78	.410	0-0	.000	29-37	.784	29	46	75	4.7	30	1	9	17	5	7	93	5.8		
03	MONK, Malica	13-2	217	16.7	24-67	.358	1-5	.200	1-2	.500	2	11	13	1.0	32	1	18	26	1	8	50	3.8		
04	SWENSON, Keiryn	15-0	187	12.5	14-46	.304	2-12	.167	3-6	.500	20	13	33	2.2	8	0	3	6	2	0	33	2.2		
32	WEST, Khadijah	15-0	148	9.9	10-27	.370	0-0	.000	1-5	.200	13	21	34	2.3	29	1	3	11	5	8	21	1.4		
12	FREEMAN, Briunna	16-1	120	7.5	7-24	.292	0-0	.000	0-2	.000	11	8	19	1.2	22	0	4	15	1	5	14	0.9		
25	SMITH, Tatiyana	2-0	4	2.0	0-0	.000	0-0	.000	0-0	.000	0	0	0	0.0	0	0	0	0	0	0	0	0.0		
22	ZIMMERMAN, Bailey	6-0	23	3.8	0-5	.000	0-3	.000	0-2	.000	2	1	3	0.5	1	0	0	3	0	1	0	0.0		
Team											31	40	71	5										
Total.....		16	3250		338-925	.365	60-213	.282	186-279	.667	194	377	571	35.7	310	7	171	269	38	104	922	57.6		
Opponents.....		16	3251		385-952	.404	84-275	.305	199-275	.724	208	420	628	39.2	283	9	233	263	68	135	1053	65.8		

TEAM STATISTICS	AR	OPP	Date	Opponent	Score	Att.
SCORING	922	1053	• 01/03/16	at #2/2 South Carolina	L 32-85	13407
Points per game	57.6	65.8	• 01/07/16	#13/10 TEXAS A&M	w 67-61	1494
Scoring margin	-8.2	-	• 01/10/16	at #5/6 Mississippi State	L 55-80	5712
FIELD GOALS-ATT	338-925	385-952	• 01/14/16	#13/15 TENNESSEE	w 64-59	1644
Field goal pct	.365	.404	• 01/17/16	#24 MISSOURI	w 64-52	4160
3 POINT FG-ATT	60-213	84-275	• 01/21/16	at LSU	w 48-44	2084
3-point FG pct	.282	.305	• 01/24/16	at Auburn	Lot 60-71	2807
3-pt FG made per game	3.8	5.3	• 01/28/16	FLORIDA	Lot 66-71	1576
FREE THROWS-ATT	186-279	199-275	• 01/31/16	NO. 13 MISS STATE	L 55-65	5273
Free throw pct	.667	.724	• 02/04/16	at No. 23 Tennessee	L 57-75	9414
F-Throws made per game	11.6	12.4	• 02/08/16	VANDERBILT	w 57-56	1946
REBOUNDS	571	628	• 02/14/16	at Missouri	L 48-69	4766
Rebounds per game	35.7	39.2	• 02/18/16	ALABAMA	w 69-67	1591
Rebounding margin	-3.6	-	• 02/21/16	at #16/16 KENTUCKY	L 63-77	7589
ASSISTS	171	233	• 02/25/16	at Georgia	L 57-72	3131
Assists per game	10.7	14.6	• 02/28/16	OLE MISS	w 60-49	3132
TURNOVERS	269	263				
Turnovers per game	16.8	16.4				
Turnover margin	-0.4	-				
Assist/turnover ratio	0.6	0.9				
STEALS	104	135				
Steals per game	6.5	8.4				
BLOCKS	38	68				
Blocks per game	2.4	4.3				
ATTENDANCE	20816	48910				
Home games-Avg/Game	8-2602	8-6114				
Neutral site-Avg/Game	-	0-0				

! = San Juan Shootout (San Juan, Puerto Rico)
 \$ = Big 12/SEC Challenge
 * = Conference game

Score by Periods	1st	2nd	3rd	4th	OT	Totals
ARKANSAS	206	200	252	253	11	922
Opponents	247	243	246	290	27	1053



JIMMY DYKES

HEAD COACH

The most successful basketball programs all have a few key elements in common.

PASSION

They are passionate about the game. The coaches are passionate about their team, the players are passionate about the opportunity to represent their university and the fans are passionate about supporting the program.

EXCITEMENT

All successful programs are filled with excitement. They are exciting to watch and to be a part of.

COMMITMENT

It takes a lot of people to make a program successful and they all have to be committed to the effort. It starts with the coaches and staff and extends to the players but the best programs in the country take it further. Everyone who impacts the program, from professors, athletic trainers, academic coordinators, administrators and fans, all have to be willing to work toward the same goal of excellence in all areas.

PERFORMANCE

Finally, successful teams have to perform at a high level every day. Whether in the classroom, in the community or on the court, doing things the right way is vital to the program's success.

The University of Arkansas made a move March 30, 2014, when they welcomed Jimmy Dykes as the eighth head coach of the Razorback women's basketball team.

QUICK HITS

- Jimmy Dykes is the eighth head coach in Razorback Women's Basketball History
- Three-year University of Arkansas basketball letterman
- Jimmy Dykes attended high school at Estes Park (Colo.) and Fayetteville HS
- Jimmy Dykes earned his bachelor's degree in speech education at Arkansas in 1985
- Graduated with honors from the University of Arkansas with a 3.54 GPA
- Served under legendary coach Eddie Sutton as an assistant at Arkansas, Kentucky and Oklahoma State

THE 411 CHRONOLOGY

Head Coach	Years	Record
University of Arkansas	2014-15	18-14, 6-10, NCAA 2nd Round
	2015-16	12-18, 7-9
	2016-17	3-0
TOTAL	2+ seasons	33-32, 13-19 SEC

Assistant Coach	Years	Worked With
University of Arkansas	1984-1985	Eddie Sutton
Sacramento State	1985-86	Bill Brown
Appalachian State University	1986-87	Tom Apke
University of Kentucky	1987-89	Eddie Sutton
University of Arkansas-Little Rock	1989-90	Mike Newell
Oklahoma State University	1990-91	Eddie Sutton

NATIONAL BASKETBALL ASSOCIATION

1991-1993 | College Scout | Seattle Supersonics

HIGH SCHOOL

1994-1998; 2003-2004 | Athletic Director | Shiloh Christian

ESPN/ABC SPORTS | 1995-2014

- Game and studio college men's and women's basketball analyst
- Game analyst for NCAA Women's Basketball Tournament
- Coverage of the WNBA playoffs
- College football sideline reporter

PERSONAL

- Born: May 3, 1961
- Bachelor's Degree: Arkansas, 1985 in Speech Education
- Family: Wife: Tiffany (Beasley); married in 2002, daughter Kennedy
- Tiffany - an Arkansas graduate, 2003
- Hometown: Tulsa, Oklahoma
- High school at Estes Park HS (Colo.), Fayetteville HS
- Multi-sport athlete

BY THE NUMBERS

- 33** Career Wins
- 20** SEC Career Wins
- 13** 2015-16 recruiting class rank
- 5** Newcomers for 2016-17
- 1** NCAA Tourney appearance
- 1** NCAA Tournament wins

DYKES VS. CONFERENCES

- Total: 30-32
- SEC: 14-22 (includes SEC Tournament)
- American: 1-0
- Atlantic-10: 1-0
- Big East: 0-1
- Big 10: 2-2
- Big 12: 1-2
- Conference USA: 1-0
- Mid-Eastern Athletic: 1-0
- MVC: 1-1
- Pac-12: 0-1
- Southland: 6-0/1-0
- SWAC: 2-0
- Summit League: 2-2
- Sun Belt: 1-1



00

16-17 HIGHS

Points	20 vs. SHSU, 11-11-16
FGM	6 vs. SHSU, 11-11-16
FGA	14 vs. ULM, 11-13-16*
3PM	3 vs. ULM, 11-13-16*
3PA	5 vs. ULM, 11-13-16
FTM	5 vs. SHSU, 11-11-16
FTA	7 vs. SHSU, 11-11-16
OREB	3 vs. SHSU, 11-11-16
DREB	5 vs. SHSU, 11-11-16
REB	8 vs. SHSU, 11-11-16
AST	4 vs. SHSU, 11-11-16
BLK	1 vs. SHSU, 11-11-16
STL	2 vs. ULM, 11-13-16
MIN	27 vs. SHSU, 11-11-16

CAREER HIGHS

Points	31, vs. Ole Miss, 1-19-14*
FGM	11, vs. Ole Miss, 1-19-14*
FGA	25, #13/15 Ky, 2-26-15
3PM	5, #13/15 Ky, 2-26-15*
3PA	11, #13/15 Ky, 2-26-15
FTM	9, at Missouri, 1-5-14
FTA	10, Tulsa, 12-14-14*
OREB	5, SHSU, 11-15-15*
DREB	10, vs. Auburn, 2-2-14
	10, vs. Florida, 1-28-16 OT
REB	13, SHSU, 11-15-15
AST	4, at Mo St, 12-10-14*
	4, vs. Florida, 1-28-16 OT
BLK	5, Tulsa, 12-14-14*
STL	3, vs. Alabama, 1-18-16*
MIN	39, at LSU, 1-21-16*

*Most Recent

MISCELLANEOUS

	2016-17	Career
10+ Pts	3	80
15+ Pts	1	59
20+ Pts	1	22
30+ Pts	-	1
10+ Rebs	-	13
15+ Rebs	-	-
2BL-2BL	-	13
5+ Ast	-	--
Led AR in Pts	2	42
Led AR in Reb	1	27
GP/GS	3/3	94/89

HONORS

- Preseason All-SEC First-Team, '16
- All-SEC Second-Team, '14, '15
- **All-SEC First-Team, '16**
- All-SEC Freshman Team, 2014
- AP All-SEC Hon. Mention, 2014
- AP All-SEC Second-Team, 2015
- SEC First-Year Academic HR, 2014
- CSM.com POW, Jan. 18, 2016

NOTES

- Just fourth player in program history named to **First-Team All-SEC** in 2016
- Named to coaches preseason All-SEC First-Team in 2016-17
- Finished 2015-16 **fourth in SEC** in scoring with 16.4 ppg, and in field goal percentage at .407 in all games || **Fourth** with 16.0 ppg and FG% with .411 in SEC-only games
- Finished 2015-16 **fifth in SEC** in rebounding with 6.3 rpg in all games
- Finished 2015-16 **eighth in SEC** in free throw percentage averaging .736 in all games || **Sixth** at .737 in SEC-only games
- Finished 2015-16 **tied for sixth in SEC** in 3-pointers made with 1.7 pg in all games || **Tied for eighth** with 1.5 in SEC-only games
- Finished 2015-16 **10th in SEC** in blocks with 1.1 bpg in all games
- Finished 2015-16 **tied for 12th in SEC** in defensive rebounds with 4.6 ppg in all games
- Finished 2015-16 **tied for 13th** in blocks with 0.9 bpg in SEC-only games



JESSICA JACKSON

F | SR | 6-3 | JACKSONVILLE, ARK.

16-17 GAME BY GAME

Opponent	Date	gs	min	Total		3-Pointers		Free throws		Rebounds				pf	a	t/o	blk	stl	pts	avg
				fg-fga	pct	3fg-fga	pct	ft-fa	pct	off	def	tot	avg							
SAM HOUSTON STATE	11/11/16	*	27	6-14	.429	3-4	.750	5-7	.714	3	5	8	8.0	3	4	0	1	0	20	20.0
LA-MONROE	11/13/16	*	23	5-14	.357	3-5	.600	0-0	.000	2	4	6	7.0	2	0	2	0	2	13	16.5
SOUTH DAKOTA	11/17/16	*	30	5-15	.333	2-7	.286	2-11	.182	3	4	7	7.0	0	2	4	0	1	14	15.7
Totals			80	16-43	.372	8-16	.500	7-18	.389	8	13	21	7.0	5	6	6	1	3	47	15.7

Games played: 3
 Minutes/game: 26.7
 Points/game: 15.7
 FG Pct: 37.2
 3FG Pct: 50.0
 FT Pct: 38.9

Rebounds/game: 7.0
 Assists/game: 2.0
 Turnovers/game: 2.0
 Assist/turnover ratio: 1.0
 Steals/game: 1.0
 Blocks/game: 0.3

JACKSON'S CAREER STATISTICS

Season	gp-gs			Total		3-Point		F-Throws		Rebounds				Scoring							
	gp	gs	min/avg	fg-fga	pct	fg-fga	pct	ft-fa	pct	off	def	tot	avg	pf	fo	ast	to	blk	stl	pts	avg
2013-14	30	30	903/30.1	163-385	.423	48-125	.384	111-138	.804	45	136	181	6.0	70	0	40	51	45	24	485	16.2
2014-15	32	29	1032/32.2	161-431	.374	56-163	.344	99-126	.786	61	139	200	6.3	86	2	30	96	33	27	477	14.9
2015-16	29	27	920/31.7	170-418	.407	48-150	.320	89-121	.736	51	132	183	6.3	76	3	30	70	33	15	477	16.4
2016-17	3	3	80/26.7	16-43	.372	8-16	.500	7-18	.389	8	13	21	7.0	5	0	6	6	1	3	47	15.7
TOTAL	94	89	2935/31.2	510-1277	.399	160-454	.352	306-403	.759	165	420	585	6.2	237	5	106	223	112	69	1486	15.8

2

NOTES

- Second-ever McDonald's All-American to join team out of HS
- Missed start of season with illness



AALIYAH WILSON
F | FR | 5-10 | MUSKOGEE, OKLA.

16-17 HIGHS

Points
FGM
FGA
3PM
3PA
FTM
FTA
OREB
DREB
REB
AST
BLK
STL
MIN

16-17 GAME BY GAME

CAREER HIGHS

Points
FGM
FGA
3PM
3PA
FTM
FTA
OREB
DREB
REB
AST
BLK
STL
MIN

MISCELLANEOUS

	2016-17	Career
10+ Pts	-	-
15+ Pts	-	-
20+ Pts	-	-
10+ Rebs	-	-
15+ Rebs	-	-
Double-Double	-	-
5+ Ast	-	-
Led AR in Pts	-	-
Led AR in Reb	-	-

HONORS

- TBA

WILSON'S CAREER STATISTICS

3

NOTES

- Opened 2016-17 as a starter
- Three games with 25+ minutes played
- Scored 12 points in season opener vs. SHSU



MALICA MONK
G | SO | 5-5 | N. LITTLE ROCK, ARK.

16-17 HIGHS

Points	12 vs. SHSU, 11-11-16
FGM	5 vs. SHSU, 11-11-16
FGA	7 vs. SHSU, 11-11-16
3PM	0
3PA	0
FTM	5 vs. ULM, 11-13-16
FTA	6 vs. ULM, 11-13-16
OREB	3 vs. ULM, 11-13-16
DREB	2 vs. ULM, 11-13-16*
REB	5 vs. ULM, 11-13-16
AST	3 vs. SHSU, 11-11-16
BLK	1 vs. ULM, 11-13-16
STL	3 vs. ULM, 11-13-16
MIN	25 vs. ULM, 11-13-16

CAREER HIGHS

Points	15, at Missouri, 2-14-16
FGM	7, at Missouri, 2-14-16
FGA	15, at Missouri, 2-14-16
3PM	1, at Missouri, 2-14-16
3PA	2, at Missouri, 2-14-16*
FTM	2, Tulsa, 11-23-15*
FTA	4, Tulsa, 11-23-15*
OREB	1, Tulsa, 11-23-15*
DREB	3, SHSU, 11-15-15
REB	3, Ole Miss, 2-28-16*
AST	6, ORU, 12-10-15
BLK	1, #7 Oregon St., 11-28-15
STL	2, at Missouri, 2-14-16*
MIN	32, at Missouri, 2-14-16

*Most Recent

MISCELLANEOUS

	2016-17	Career
10+ Pts	1	3
15+ Pts	-	1
20+ Pts	-	-
10+ Rebs	-	-
15+ Rebs	-	-
Double-Double	-	-
5+ Ast	-	2
Led AR in Pts	-	-
Led AR in Reb	-	-
GP/GS	3/3	30/8

HONORS

16-17 GAME BY GAME

Opponent	Date	gs	min	Total		3-Pointers		Free throws		Rebounds				pf	a	t/o	blk	stl	pts	avg	
				fg-fga	pct	3fg-fga	pct	ft-fa	pct	off	def	tot	avg								
SAM HOUSTON STATE	11/11/16	*	27	5-7	.714	0-0	.000	2-2	1.000	0	2	2	2.0	2	3	1	0	2	12	12.0	
LA-MONROE	11/13/16	*	25	2-3	.667	0-0	.000	5-6	.833	3	2	5	3.5	1	2	1	1	3	9	10.5	
SOUTH DAKOTA	11/17/16	*	34	5-10	.500	0-0	.000	2-2	1.000	1	1	2	3.0	3	4	2	0	4	12	11.0	
Totals			3	86	12-20	.600	0-0	.000	9-10	.900	4	5	9	3.0	6	9	4	1	9	33	11.0

Games played: 3
Minutes/game: 28.7
Points/game: 11.0
FG Pct: 60.0
FT Pct: 90.0

Rebounds/game: 3.0
Assists/game: 3.0
Turnovers/game: 1.3
Assist/turnover ratio: 2.3
Steals/game: 3.0
Blocks/game: 0.3

MONK'S CAREER STATISTICS

Season	gp-gs	min/avg	Total		3-Point		F-Throws		Rebounds				Scoring							
			fg-fga	pct	fg-fga	pct	ft-fa	pct	off	def	tot	avg	pf	fo	ast	to	blk	stl	pts	avg
2015-16	27-5	461/17.1	48-136	.353	2-10	.200	12-19	.632	6	23	29	1.1	60	2	47	44	5	23	110	4.1
2016-17	3-3	86/28.7	12-20	.600	0-0	.000	9-10	.900	4	5	9	3.0	6	0	9	4	1	9	33	11.0
TOTAL	30-8	547/18.2	60-156	.385	2-10	.200	21-29	.724	10	28	38	1.3	66	2	56	48	6	32	143	4.8

4

NOTES

- Career-best 13 points against ULM
- Two games with 20+ minutes this year
- At least one three pointer in every game
- Tied career-best with six rebounds versus ULM



KEIRYN SWENSON
F | SO | 6-1 | WICHITA, KAN.

16-17 HIGHS

Points	13 vs. ULM, 11-13-16
FGM	5 vs. ULM, 11-13-16
FGA	7 vs. ULM, 11-13-16
3PM	2 vs. ULM, 11-13-16
3PA	3 vs. ULM, 11-13-16*
FTM	1 vs. ULM, 11-13-16
FTA	1 vs. ULM, 11-13-16
OREB	2 vs. ULM, 11-13-16
DREB	4 vs. ULM, 11-13-16
REB	6 vs. ULM, 11-13-16
AST	1 vs. ULM, 11-13-16*
BLK	1 vs. ULM, 11-13-16
STL	1 vs. ULM, 11-13-16*
MIN	23 vs. ULM, 11-13-16*

CAREER HIGHS

Points	13 vs. ULM, 11-13-16
FGM	5 vs. ULM, 11-13-16
FGA	7 vs. ULM, 11-13-16
3PM	2, #16 Kentucky, 2-21-16*
3PA	3, #16 Kentucky, 2-21-16
FTM	3, SHSU, 11-15-15
FTA	4, SHSU, 11-15-15
OREB	5, SHSU, 11-15-15
DREB	6, New Orleans, 12-30-15
REB	6 vs. ULM, 11-13-16*
AST	2, SELA, 11-13-15
BLK	1, at SDSU, 11-18-15
STL	2, New Orleans, 12-30-15*
MIN	25, at Missouri, 2-14-16*

*Most Recent

16-17 GAME BY GAME

Opponent	Date	gs	min	Total		3-Pointers		Free throws		Rebounds				pf	a	t/o	blk	stl	pts	avg
				fg	fga	pct	fg	fga	pct	ft	fta	pct	off							
SAM HOUSTON STATE	11/11/16		23	2-6	.333	1-3	.333	0-0	.000	0	5	5	5.0	3	1	2	0	1	5	5.0
LA-MONROE	11/13/16		23	5-7	.714	2-3	.667	1-1	1.000	2	4	6	5.5	0	1	0	1	1	13	9.0
SOUTH DAKOTA	11/17/16		18	1-3	.333	0-1	.000	1-2	.500	5	1	6	5.7	0	0	0	1	0	3	7.0
Totals		0	64	8-16	.500	3-7	.429	2-3	.667	7	10	17	5.7	3	2	2	2	2	21	7.0

Games played: 3
Minutes/game: 21.3
Points/game: 7.0
FG Pct: 50.0
3FG Pct: 42.9
FT Pct: 66.7

Rebounds/game: 5.7
Assists/game: 0.7
Turnovers/game: 0.7
Assist/turnover ratio: 1.0
Steals/game: 0.7
Blocks/game: 0.7

MISCELLANEOUS

	2016-17	Career
10+ Pts	1	1
15+ Pts	-	-
20+ Pts	-	-
10+ Rebs	-	-
15+ Rebs	-	-
Double-Double	-	-
5+ Ast	-	-
Led AR in Pts	1	1
Led AR in Reb	-	1
GP/GS	3/0	32/1

HONORS

- SEC First-Year Academic Honor Roll ('16)
- Arkansas Academic Champion (4.00 GPA)
(Fall 2015, Spring 2016)

SWENSON'S CAREER STATISTICS

Season	gp-gs	min/avg	Total		3-Point		F-Throws		Rebounds				Scoring							
			fg	fga	pct	fg	fga	pct	ft	fta	pct	off	def	tot	avg	pf	fo	ast	to	blk
2015-16	29-1	373/12.9	27-84	.321	5-21	.238	19-27	.704	34	34	68	2.3	26	0	7	15	4	10	78	2.7
2016-17	3-0	64/21.3	8-16	.500	3-7	.429	2-3	.667	7	10	17	5.7	3	0	2	2	2	2	21	7.0
TOTAL	32-1	437/13.7	35-100	.350	8-28	.286	21-30	.700	41	44	85	2.7	29	0	9	17	6	12	99	3.1

10

NOTES

- Played in two games this year
- Career-best nine points in 14 minutes against ULM



KIARA WILLIAMS
F/C | FR | 6-1 | LITTLE ROCK, ARK.

16-17 HIGHS

Points	9 vs. ULM, 11-13-16
FGM	4 vs. ULM, 11-13-16
FGA	6 vs. ULM, 11-13-16
3PM	0
3PA	0
FTM	1 vs. ULM, 11-13-16
FTA	4 vs. ULM, 11-13-16
OREB	2 vs. ULM, 11-13-16
DREB	3 vs. ULM, 11-13-16
REB	5 vs. ULM, 11-13-16
AST	0
BLK	0
STL	1 vs. SHSU, 11-11-16
MIN	15 vs. ULM, 11-13-16

CAREER HIGHS

Points	9 vs. ULM, 11-13-16
FGM	4 vs. ULM, 11-13-16
FGA	6 vs. ULM, 11-13-16
3PM	0
3PA	0
FTM	1 vs. ULM, 11-13-16
FTA	4 vs. ULM, 11-13-16
OREB	2 vs. ULM, 11-13-16
DREB	3 vs. ULM, 11-13-16
REB	5 vs. ULM, 11-13-16
AST	0
BLK	0
STL	1 vs. SHSU, 11-11-16
MIN	15 vs. ULM, 11-13-16

*Most Recent

MISCELLANEOUS

	2016-17	Career
10+ Pts	-	-
15+ Pts	-	-
20+ Pts	-	-
10+ Rebs	-	-
15+ Rebs	-	-
Double-Double	-	-
5+ Ast	-	-
Led AR in Pts	-	-
Led AR in Reb	-	-
GP/GS	-/2	-/2

HONORS

• TBA

16-17 GAME BY GAME

Opponent	Date	gs	min	Total		3-Pointers		Free throws		Rebounds				pf	a	t/o	blk	stl	pts	avg
				fg-fga	pct	3fg-fga	pct	ft-fa	pct	off	def	tot	avg							
SAM HOUSTON STATE	11/11/16	5	0-1	.000	0-0	.000	0-0	.000	0	1	1	1.0	0	0	1	0	1	0	0	0.0
LA-MONROE	11/13/16	14	4-6	.667	0-0	.000	1-4	.250	2	3	5	3.0	4	0	0	0	0	0	9	4.5
SOUTH DAKOTA	11/17/16	dnp	-	-	-	-	-	-	-	-	-	-	-	-	-	-	-	-	-	-
Totals		0	19	4-7	.571	0-0	.000	1-4	.250	2	4	6	3.0	4	0	1	0	1	9	4.5

Games played: 2
Minutes/game: 9.5
Points/game: 4.5
FG Pct: 57.1
FT Pct: 25.0

Rebounds/game: 3.0
Turnovers/game: 0.5
Steals/game: 0.5

WILLIAMS' CAREER STATISTICS

Season	gp-gs	min/avg	Total		3-Point		F-Throws		Rebounds				Scoring							
			fg-fga	pct	fg-fga	pct	ft-fa	pct	off	def	tot	avg	pf	fo	ast	to	blk	stl	pts	avg
2016-17	2-0	19/9.5	4-7	.571	0-0	.000	1-4	.250	2	4	6	3.0	4	0	0	1	0	1	9	4.5
TOTAL	2-0	19/9.5	4-7	.571	0-0	.000	1-4	.250	2	4	6	3.0	4	0	0	1	0	1	9	4.5

12

NOTES

- Scored career-best 12 points in win over ULM
- Second consecutive game in double figures with 10 points against South Dakota



BRIUNNA FREEMAN
G | SO | 5-9 | PELHAM, GA.

16-17 HIGHS

Points	12 vs. ULM, 11-13-16
FGM	5 vs. ULM, 11-13-16
FGA	7 vs. ULM, 11-13-16
3PM	0
3PA	0
FTM	2 vs. ULM, 11-13-16*
FTA	2 vs. ULM, 11-13-16*
OREB	3 vs. ULM, 11-13-16
DREB	1 vs. ULM, 11-13-16*
REB	4 vs. ULM, 11-13-16
AST	1 vs. ULM, 11-13-16
BLK	0
STL	1 vs. ULM, 11-13-16*
MIN	22 vs. ULM, 11-13-16

CAREER HIGHS

Points	12 vs. ULM, 11-13-16
FGM	5 vs ULM, 11-13-16
FGA	9, at Butler, 12-13-15
3PM	0
3PA	0
FTM	3, at Butler, 12-13-15
FTA	4, at Butler, 12-13-15
OREB	4, at Butler, 12-13-15
DREB	4, at Butler, 12-13-15
REB	8, at Butler, 12-13-15
AST	2, MVSU, 12-28-15*
BLK	1, Louisiana, 11-27-15
STL	3, #7 Oreg. St., 11-28-15*
MIN	29, at Butler, 12-13-15

*Most Recent

16-17 GAME BY GAME

Opponent	Date	gs	min	Total		3-Pointers		Free throws		Rebounds				pf	a	t/o	blk	stl	pts	avg
				fg-fga	pct	3fg-fga	pct	ft-fga	pct	off	def	tot	avg							
SAM HOUSTON STATE	11/11/16		9	2-3	.667	0-0	.000	2-2	1.000	2	1	3	3.0	2	0	0	0	1	6	6.0
LA-MONROE	11/13/16		22	5-7	.714	0-0	.000	2-2	1.000	3	1	4	3.5	3	1	1	0	1	12	9.0
SOUTH DAKOTA	11/17/16		24	4-7	.571	0-0	.000	2-4	.500	0	1	1	2.7	2	0	2	0	5	10	9.3
Totals		0	55	11-17	.647	0-0	.000	6-8	.750	5	3	8	2.7	7	1	3	0	7	28	9.3

Games played: 3
Minutes/game: 18.3
Points/game: 9.3
FG Pct: 64.7
FT Pct: 75.0

Rebounds/game: 2.7
Assists/game: 0.3
Turnovers/game: 1.0
Assist/turnover ratio: 0.3
Steals/game: 2.3

MISCELLANEOUS

	2016-17	Career
10+ Pts	2	2
15+ Pts	-	-
20+ Pts	-	-
10+ Rebs	-	-
15+ Rebs	-	-
Double-Double	-	-
5+ Ast	-	-
Led AR in Pts	1	1
Led AR in Reb	-	2
GP/GS	3/0	32/3

HONORS

- Arkansas Academic Honor Roll (3.0-3.49 GPA) (Spring 2016)

FREEMAN'S CAREER STATISTICS

Season	gp-gs	min/avg	Total		3-Point		F-Throws		Rebounds				Scoring							
			fg-fga	pct	fg-fga	pct	ft-fga	pct	off	def	tot	avg	pf	fo	ast	to	blk	stl	pts	avg
2015-16	29-3	273/9.4	21-70	.300	0-0	.000	5-15	.333	32	28	60	2.1	46	1	13	21	2	13	47	1.6
2016-17	3-0	55/18.3	11-17	.647	0-0	.000	6-8	.750	5	3	8	2.7	7	0	1	3	0	7	28	9.3
TOTAL	32-3	328/10.3	32-87	.368	0-0	.000	11-23	.478	37	31	68	2.1	53	1	14	24	2	20	75	2.3

14

NOTES

- Member of the SEC Women's Basketball Leadership Council
- Played and started both games as a true freshman
- Scored a career-best 10 points in come-from-behind win over 2016 WNIT Champion South Dakota



JAILYN MASON
PG | FR | 5-9 | MASON, OHIO

16-17 HIGHS

Points	10 vs. S Dakota, 11-17-16
FGM	3 vs. S Dakota, 11-17-16
FGA	9 vs. SHSU, 11-11-16
3PM	2 vs. S Dakota, 11-17-16
3PA	3 vs. S Dakota, 11-17-16
FTM	2 vs. S Dakota, 11-17-16
FTA	2 vs. S Dakota, 11-17-16
OREB	0
DREB	4 vs. SHSU, 11-11-16
REB	4 vs. SHSU, 11-11-16
AST	5 vs. SHSU, 11-11-16
BLK	0
STL	3
MIN	36 vs. SHSU, 11-11-16

* Most Recent

CAREER HIGHS

Points	10 vs. S Dakota, 11-17-16
FGM	3 vs. S Dakota, 11-17-16
FGA	9 vs. SHSU, 11-11-16
3PM	2 vs. S Dakota, 11-17-16
3PA	3 vs. S Dakota, 11-17-16
FTM	2 vs. S Dakota, 11-17-16
FTA	2 vs. S Dakota, 11-17-16
OREB	0
DREB	4 vs. SHSU, 11-11-16
REB	4 vs. SHSU, 11-11-16
AST	5 vs. SHSU, 11-11-16
BLK	0
STL	3
MIN	36 vs. SHSU, 11-11-16

* Most Recent

MISCELLANEOUS

	2016-17	Career
10+ Pts	-	-
15+ Pts	-	-
20+ Pts	-	-
10+ Rebs	-	-
15+ Rebs	-	-
Double-Double	-	-
5+ Ast	1	1
Led AR in Pts	-	-
Led AR in Reb	-	-
GP/GS	3/3	3/3

HONORS

- TBA

16-17 GAME BY GAME

Opponent	Date	gs	min	Total		3-Pointers		Free throws		Rebounds				pf	a	t/o	blk	stl	pts	avg	
				fg-fga	pct	3fg-fga	pct	ft-fga	pct	off	def	tot	avg								
SAM HOUSTON STATE	11/11/16	*	36	2-9	.222	1-2	.500	0-0	.000	0	4	4	4.0	1	5	2	0	3	5	5.0	
LA-MONROE	11/13/16	*	18	2-4	.500	0-1	.000	0-0	.000	0	0	0	2.0	4	2	1	0	0	4	4.5	
SOUTH DAKOTA	11/17/16	*	30	3-7	.429	2-3	.667	2-2	1.000	0	2	2	2.0	1	2	0	0	1	10	6.3	
Totals			3	84	7-20	.350	3-6	.500	2-2	1.000	0	6	6	2.0	6	9	3	0	4	19	6.3

Games played: 3
Minutes/game: 28.0
Points/game: 6.3
FG Pct: 35.0
3FG Pct: 50.0
FT Pct: 100.0

Rebounds/game: 2.0
Assists/game: 3.0
Turnovers/game: 1.0
Assist/turnover ratio: 3.0
Steals/game: 1.3

MASON'S CAREER STATISTICS

Season	gp-gs	min/avg	Total		3-Point		F-Throws		Rebounds				Scoring							
			fg-fga	pct	fg-fga	pct	ft-fga	pct	off	def	tot	avg	pf	fo	ast	to	blk	stl	pts	avg
2016-17	3-3	84/28.0	7-20	.350	3-6	.500	2-2	1.000	0	6	6	2.0	6	0	9	3	0	4	19	6.3
TOTAL	3-3	84/28.0	7-20	.350	3-6	.500	2-2	1.000	0	6	6	2.0	6	0	9	3	0	4	19	6.3

20

NOTES

- Played limited minutes in both games



SYDNEY STOUT
F | FR | 6-0 | BIXBY, OKLA.

16-17 HIGHS

Points	0
FGM	0
FGA	2 vs. ULM, 11-13-16
3PM	0
3PA	2 vs. ULM, 11-13-16
FTM	0
FTA	0
OREB	0
DREB	0
REB	0
AST	0
BLK	1 vs. ULM, 11-13-16
STL	0
MIN	6 vs. ULM, 11-13-16

* Most Recent

CAREER HIGHS

Points	0
FGM	0
FGA	2 vs. ULM, 11-13-16
3PM	0
3PA	2 vs. ULM, 11-13-16
FTM	0
FTA	0
OREB	0
DREB	0
REB	0
AST	0
BLK	1 vs. ULM, 11-13-16
STL	0
MIN	6 vs. ULM, 11-13-16

* Most Recent

MISCELLANEOUS

	2016-17	Career
10+ Pts	-	-
15+ Pts	-	-
20+ Pts	-	-
10+ Rebs	-	-
15+ Rebs	-	-
Double-Double	-	-
5+ Ast	-	-
Led AR in Pts	-	-
Led AR in Reb	-	-
GP/GS	-/2	-/2

HONORS

- TBA

16-17 GAME BY GAME

Opponent	Date	gs	min	Total		3-Pointers		Free throws		Rebounds				pf	a	t/o	blk	stl	pts	avg
				fg	fga	pct	3fg	3fga	pct	ft	fta	pct	off							
SAM HOUSTON STATE	11/11/16	3		0-0	.000	0-0	.000	0-0	.000	0	0	0	0.0	0	0	0	0	0	0	0.0
LA-MONROE	11/13/16	6		0-2	.000	0-2	.000	0-0	.000	0	0	0	0.0	1	0	0	1	0	0	0.0
SOUTH DAKOTA	11/17/16	dnp		-	-	-	-	-	-	-	-	-	-	-	-	-	-	-	-	-
Totals		0	9	0-2	.000	0-2	.000	0-0	.000	0	0	0	0.0	1	0	0	1	0	0	0.0

Games played: 2
Minutes/game: 4.5
FG Pct: 0.0
3FG Pct: 0.0

Blocks/game: 0.5

STOUT'S CAREER STATISTICS

Season	gp-gs	min/avg	Total		3-Point		F-Throws		Rebounds				Scoring										
			fg	fga	pct	fg	fga	pct	ft	fta	pct	off	def	tot	avg	pf	fo	ast	to	blk	stl	pts	avg
2016-17	2-0	9/4.5	0-2	.000	0-2	.000	0-0	.000	0	0	0	0.0	1	0	0	0	0	1	0	0	0	0	0.0
TOTAL	2-0	9/4.5	0-2	.000	0-2	.000	0-0	.000	0	0	0	0.0	1	0	0	0	1	0	0	0	0	0	0.0

21

NOTES

- Missed first game with a family emergency



DEVIN COSPER
G | SR | 5-10 | COFFEYVILLE, KAN.

16-17 HIGHS

Points	6 vs. ULM, 11-13-16
FGM	2 vs. ULM, 11-13-16
FGA	5 vs. ULM, 11-13-16
3PM	0 vs. ULM, 11-13-16
3PA	2 vs. ULM, 11-13-16
FTM	2 vs. ULM, 11-13-16
FTA	2 vs. ULM, 11-13-16
OREB	0 vs. ULM, 11-13-16
DREB	2 vs. South Dakota, 11-17-16
REB	1 vs. ULM, 11-13-16
AST	5 vs. ULM, 11-13-16
BLK	1 vs. ULM, 11-13-16
STL	4 vs. ULM, 11-13-16
MIN	18 vs. ULM, 11-13-16

CAREER HIGHS

Points	17, No. 23 Tenn., 2-4-16*
	17, at Auburn, 1-24-16 OT
FGM	7, MVSU, 12-28-15
FGA	17, at Butler, 12-13-15
	19, at Auburn, 1-24-16 OT
3PM	3, #5/6 Texas, 12-20-15
3PA	9, at Butler, 12-13-15
	9, at Auburn, 1-24-16 OT*
FTM	7, New Orleans, 12-30-15
FTA	8, New Orleans, 12-30-15
OREB	2, MVSU, 12-28-15*
DREB	5, vs. Alabama, 1-18-16*
	5, vs. Florida, 1-28-16 OT*
	8, at Auburn, 1-24-16 OT
REB	6, ORU, 12-10-15
	9, at Auburn, 1-24-16 OT
AST	5, vs. Vanderbilt, 2-8-16
BLK	3, MVSU, 12-28-15
STL	3, at Georgia, 2-26-16*
MIN	37, at Butler, 12-13-15
	42, at Auburn, 1-24-16 OT

*Most Recent

MISCELLANEOUS

	2016-17	Career
10+ Pts	-	15
15+ Pts	-	5
20+ Pts	-	1
10+ Rebs	-	-
15+ Rebs	-	-
Double-Double	-	-
5+ Ast	1	2
Led AR in Pts	-	2
Led AR in Reb	-	-
GP/GS	2/0	32/25

HONORS

- SEC First-Year Academic Honor Roll ('16)
- Arkansas Academic Honor Roll (3.0-3.49 GPA) (Fall 2015, Spring 2016)

16-17 GAME BY GAME

Opponent	Date	gs	min	Total		3-Pointers		Free throws		Rebounds				pf	a	t/o	blk	stl	pts	avg
				fg-fga	pct	3fg-fga	pct	ft-fa	pct	off	def	tot	avg							
SAM HOUSTON STATE	11/11/16	dnp	-	-	-	-	-	-	-	-	-	-	-	-	-	-	-	-	-	-
LA-MONROE	11/13/16	18	2-5	.400	0-2	.000	2-2	1.000	0	1	1	1.0	0	5	0	1	4	6	6.0	
SOUTH DAKOTA	11/17/16	6	0-1	.000	0-0	.000	0-0	.000	0	2	2	1.5	0	0	0	0	0	0	3.0	
Totals		0	24	2-6	.333	0-2	.000	2-2	1.000	0	3	3	1.5	0	5	0	1	4	6	3.0

Games played: 2
Minutes/game: 12.0
Points/game: 3.0
FG Pct: 33.3
3FG Pct: 0.0
FT Pct: 100.0

Rebounds/game: 1.5
Assists/game: 2.5
Assist/turnover ratio: 99.9
Steals/game: 2.0
Blocks/game: 0.5

COSPER'S CAREER STATISTICS

Season	gp-gs	min/avg	Total		3-Point		F-Throws		Rebounds				Scoring							
			fg-fga	pct	fg-fga	pct	ft-fa	pct	off	def	tot	avg	pf	fo	ast	to	blk	stl	pts	avg
2015-16	30-25	792/26.4	97-293	.331	25-104	.240	50-72	.694	16	83	99	3.3	57	0	42	74	5	34	269	9.0
2016-17	2-0	24/12.0	2-6	.333	0-2	.000	2-2	1.000	0	3	3	1.5	0	0	5	0	1	4	6	3.0
TOTAL	32-25	816/25.5	99-299	.331	25-106	.236	52-74	.703	16	86	102	3.2	57	0	47	74	6	38	275	8.6

22

NOTES

- Played and started two games this season
- Nine points against Sam Houston State is a career best



BAILEY ZIMMERMAN
G/F | SO | 6-0 | ST. VINCENT, ARK.

16-17 HIGHS

Points	9 vs. SHSU, 11-11-16
FGM	3 vs. SHSU, 11-11-16
FGA	6 vs. SHSU, 11-11-16
3PM	2 vs. South Dakota, 11-17-16*
3PA	5 vs. SHSU, 11-11-16
FTM	1 vs. South Dakota, 11-17-16*
FTA	2 vs. South Dakota, 11-17-16*
OREB	2 vs. ULM, 11-13-16*
DREB	5 vs. SHSU, 11-11-16
REB	7 vs. SHSU, 11-11-16
AST	3 vs. SHSU, 11-11-16
BLK	0
STL	1 vs. ULM, 11-13-16*
MIN	32 vs. SHSU, 11-11-16

* Most Recent

CAREER HIGHS

Points	9 vs. SHSU, 11-11-16
FGM	3 vs. SHSU, 11-11-16
FGA	9 at Butler, 12-13-15
3PM	2 vs. South Dakota, 11-17-16*
3PA	7, at Butler, 12-13-15
FTM	2 vs. South Dakota, 11-17-16*
FTA	2 vs. South Dakota, 11-17-16*
OREB	3 at Butler, 12-13-15*
DREB	5 vs. SHSU, 11-11-16
REB	7 vs. SHSU, 11-11-16
AST	3 vs. SHSU, 11-11-16
BLK	1 at SDSU, 11-18-15*
STL	2 at Butler, 12-13-15
MIN	32 vs. SHSU, 11-11-16

*Most Recent

MISCELLANEOUS

	2016-17	Career
10+ Pts	-	-
15+ Pts	-	-
20+ Pts	-	-
10+ Rebs	-	-
15+ Rebs	-	-
Double-Double	-	-
5+ Ast	-	-
Led AR in Pts	-	-
Led AR in Reb	-	-
GP/GS	3/3	23/4

HONORS

- Arkansas Athletic Director's List (3.5-3.99 GPA) (Fall 2015)

16-17 GAME BY GAME

Opponent	Date	gs	min	Total		3-Pointers		Free throws		Rebounds				pf	a	t/o	blk	stl	pts	avg	
				fg-fga	pct	3fg-fga	pct	ft-fa	pct	off	def	tot	avg								
SAM HOUSTON STATE	11/11/16	*	32	3-6	.500	2-5	.400	1-2	.500	2	3	5	5.0	1	3	1	0	1	9	9.0	
LA-MONROE	11/13/16	*	18	1-7	.143	0-3	.000	1-2	.500	2	5	7	6.0	0	2	0	0	1	3	6.0	
SOUTH DAKOTA	11/17/16	*	15	2-4	.500	2-3	.667	1-2	.500	2	2	4	5.3	3	1	0	0	0	7	6.3	
Totals			3	65	6-17	.353	4-11	.364	3-6	.500	6	10	16	5.3	4	6	1	0	2	19	6.3

Games played: 3
Minutes/game: 21.7
Points/game: 6.3
FG Pct: 35.3
3FG Pct: 36.4
FT Pct: 50.0

Rebounds/game: 5.3
Assists/game: 2.0
Turnovers/game: 0.3
Assist/turnover ratio: 6.0
Steals/game: 0.7

ZIMMERMAN'S CAREER STATISTICS

Season	gp-gs	min/avg	Total		3-Point		F-Throws		Rebounds				Scoring							
			fg-fga	pct	fg-fga	pct	ft-fa	pct	off	def	tot	avg	pf	fo	ast	to	blk	stl	pts	avg
2015-16	20-1	174/8.7	6-48	.125	4-33	.121	7-12	.583	12	9	21	1.1	9	0	4	15	2	4	23	1.2
2016-17	3-3	65/21.7	6-17	.353	4-11	.364	3-6	.500	6	10	16	5.3	4	0	6	1	0	2	19	6.3
TOTAL	23-4	239/10.4	12-65	.185	8-44	.182	10-18	.556	18	19	37	1.6	13	0	10	16	2	6	42	1.8

24

NOTES

- Finished 2015-16 **tied for 12th in SEC** in assists with 2.7 apg in SEC-only games
- Scored season-best 10 points against ULM



JORDAN DANBERRY
G | SO | 5-8 | CONWAY, ARK.

16-17 HIGHS

Points	10 vs. ULM, 11-13-16
FGM	3 vs. ULM, 11-13-16
FGA	5 vs. ULM, 11-13-16
3PM	2 vs. ULM, 11-13-16
3PA	2 vs. ULM, 11-13-16
FTM	2 vs. South Dakota, 11-17-16*
FTA	4 vs. SHSU, 11-11-16
OREB	1 vs. SHSU, 11-11-16
DREB	4 vs. ULM, 11-13-16
REB	4 vs. ULM, 11-13-16
AST	1 vs. ULM, 11-13-16
BLK	0
STL	1 vs. South Dakota, 11-17-16
MIN	15 vs. ULM, 11-13-16

*Most Recent

CAREER HIGHS

Points	14, #7 OSU, 11-28-15*
FGM	6, #7 OSU, 11-28-15*
FGA	14, at Missouri, 2-14-16*
3PM	2 vs. ULM, 11-13-16*
3PA	4, at SDSU, 11-18-15
FTM	5, Ole Miss, 2-28-16
FTA	11, Ole Miss, 2-28-16
OREB	5, Ole Miss, 2-28-16
DREB	5, at Missouri, 2-14-16
REB	7, Ole Miss, 2-28-16
AST	10, vs. Alabama, 1-18-16
BLK	1, Ole Miss, 2-28-16*
STL	3, No. 23 Tenn., 2-4-16*
MIN	32, at Missouri, 2-14-16

*Most Recent

MISCELLANEOUS

	2016-17	Career
10+ Pts	1	11
15+ Pts	-	-
20+ Pts	-	-
10+ Rebs	-	-
15+ Rebs	-	-
Double-Double	-	-
5+ Ast	-	3
Led AR in Pts	-	2
Led AR in Reb	-	1
GP/GS	3/0	33/13

HONORS

- TBA

16-17 GAME BY GAME

Opponent	Date	gs	min	Total		3-Pointers		Free throws		Rebounds				pf	a	t/o	blk	stl	pts	avg
				fg-fga	pct	3fg-fga	pct	ft-fga	pct	off	def	tot	avg							
SAM HOUSTON STATE	11/11/16	12		0-1	.000	0-0	.000	2-4	.500	1	0	1	1.0	2	0	2	0	0	2	2.0
LA-MONROE	11/13/16	15		3-5	.600	2-2	1.000	2-2	1.000	0	4	4	2.5	1	1	2	0	0	10	6.0
SOUTH DAKOTA	11/17/16	12		0-1	.000	0-1	.000	2-2	1.000	1	0	1	2.0	2	1	1	0	1	2	4.7
Totals		0	39	3-7	.429	2-3	.667	6-8	.750	2	4	6	2.0	5	2	5	0	1	14	4.7

Games played: 3
Minutes/game: 13.0
Points/game: 4.7
FG Pct: 42.9
3FG Pct: 66.7
FT Pct: 75.0

Rebounds/game: 2.0
Assists/game: 0.7
Turnovers/game: 1.7
Assist/turnover ratio: 0.4
Steals/game: 0.3

DANBERRY'S CAREER STATISTICS

Season	gp-gs	min/avg	Total		3-Point		F-Throws		Rebounds				Scoring							
			fg-fga	pct	fg-fga	pct	ft-fga	pct	off	def	tot	avg	pf	fo	ast	to	blk	stl	pts	avg
2015-16	30-13	575/19.2	77-233	.330	3-28	.107	44-71	.620	30	48	78	2.6	72	2	70	83	5	27	201	6.7
2016-17	3-0	39/13.0	3-7	.429	2-3	.667	6-8	.750	2	4	6	2.0	5	0	2	5	0	1	14	4.7
TOTAL	33-13	614/18.6	80-240	.333	5-31	.161	50-79	.633	32	52	84	2.5	77	2	72	88	5	28	215	6.5

25

NOTES

- Missed start of season with injury/illness



TATIYANA SMITH
F | SR | 6-3 | PLANO, TEXAS

16-17 HIGHS

Points
FGM
FGA
3PM
3PA
FTM
FTA
OREB
DREB
REB
AST
BLK
STL
MIN

CAREER HIGHS

Points 2, MVSU, 12-28-15
FGM 1, MVSU, 12-28-15
FGA: 1, New Orleans, 12-30-15*
FTM: 2, New Orleans, 12-30-15
FTA 2, New Orleans, 12-30-15
3PM --
3PA --
OREB 1, MVSU, 12-28-15
DREB --
REB 1, MVSU, 12-28-15
AST 1, MVSU, 12-28-15
BLK 1, MVSU, 12-28-15
STL 1, New Orleans, 12-30-15
MIN 6, MVSU, 12-28-15

*Most Recent

16-17 GAME BY GAME

MISCELLANEOUS

	2016-17	Career
10+ Pts	-	-
15+ Pts	-	-
20+ Pts	-	-
10+ Rebs	-	-
15+ Rebs	-	-
Double-Double	-	-
5+ Ast	-	-
Led AR in Pts	-	-
Led AR in Reb	-	-
GP/GS	-	4/0

HONORS

- Arkansas Academic Honor Roll (3.0-3.49 GPA) (Fall 2015)

SMITH'S CAREER STATISTICS

Season	gp-gs	min/avg	Total		3-Point		F-Throws		Rebounds				Scoring							
			fg-fga	pct	fg-fga	pct	ft-fa	pct	off	def	tot	avg	pf	fo	ast	to	blk	stl	pts	avg
2015-16	4-0	15/3.8	1-2	.500	0-0	.000	2-2	1.000	1	0	1	0.3	0	0	1	1	1	1	4	1.0
TOTAL	4-0	15/3.8	1-2	.500	0-0	.000	2-2	1.000	1	0	1	0.3	0	0	1	1	1	1	4	1.0

35

NOTES

- Back-to-back-to-back games in double figure scoring to start the season



ALECIA COOLEY
C | SR | 6-4 | EVANSTON, ILL.

16-17 HIGHS

Points	13 vs. ULM, 11-13-16
FGM	vs. South Dakota, 11-17-16
FGA	8 vs. South Dakota, 11-17-16*
3PM	0
3PA	0
FTM	7 vs. ULM, 11-13-16
FTA	12 vs. ULM, 11-13-16
OREB	2 vs. SHSU, 11-11-16
DREB	5 vs. ULM, 11-13-16
REB	6 vs. ULM, 11-13-16
AST	2 vs. ULM, 11-13-16
BLK	4 vs. SHSU, 11-11-16
STL	1 vs. SHSU, 11-11-16
MIN	31 vs. South Dakota, 11-17-16

*Most Recent

CAREER HIGHS

Points	19, ORU, 12-10-15
FGM	8, ORU, 12-10-15
FGA	10, ORU, 12-10-15
	10, vs. Florida, 1-28-16 OT
FTM	7 vs. ULM, 11-13-16
FTA	12 vs. ULM, 11-13-16
OREB	7, #24 Missouri, 1-17-16
DREB	6, MVSU, 12-28-15*
	6, at Auburn, 1-24-16 OT
REB	10, #24 Missouri, 1-17-16
	10, vs. Florida, 1-28-16 OT
AST	2, #13/10 TAMU, 1-7-16*
BLK	2, Tulsa, 11-23-15
	2, at Auburn, 1-24-16 OT
STL	1, vs. Alabama, 1-18-16*
	2, at Auburn, 1-24-16 OT
MIN	33, ORU, 12-10-15
	39, at Auburn, 1-24-16 OT

*Most Recent

MISCELLANEOUS

	2016-17	Career
10+ Pts	2	9
15+ Pts	-	2
20+ Pts	-	-
10+ Rebs	-	4
15+ Rebs	-	-
Double-Double	-	3
5+ Ast	-	-
Led AR in Pts	1	4
Led AR in Reb	-	5
GP/GS	3/3	33/31

HONORS

- Arkansas Academic Honor Roll (3.0-3.49 GPA) (Spring 2016)

16-17 GAME BY GAME

Opponent	Date	gs	min	Total		3-Pointers		Free throws		Rebounds				pf	a	t/o	blk	stl	pts	avg	
				fg-fga	pct	3fg-fga	pct	ft-fa	pct	off	def	tot	avg								
SAM HOUSTON STATE	11/11/16	*	26	4-8	.500	0-0	.000	4-6	.667	2	3	5	5.0	0	0	2	4	1	12	12.0	
LA-MONROE	11/13/16	*	18	3-5	.600	0-0	.000	7-12	.583	1	5	6	5.5	1	2	1	1	0	13	12.5	
SOUTH DAKOTA	11/17/16	*	31	5-8	.625	0-0	.000	2-2	1.000	1	2	3	4.7	3	1	2	1	0	12	12.3	
Totals			3	75	12-21	.571	0-0	.000	13-20	.650	4	10	14	4.7	4	3	5	6	1	37	12.3

Games played: 3
Minutes/game: 25.0
Points/game: 12.3
FG Pct: 57.1
FT Pct: 65.0

Rebounds/game: 4.7
Assists/game: 1.0
Turnovers/game: 1.7
Assist/turnover ratio: 0.6
Steals/game: 0.3
Blocks/game: 2.0

COOLEY'S CAREER STATISTICS

Season	gp-gs	min/avg	Total		3-Point		F-Throws		Rebounds				Scoring							
			fg-fga	pct	fg-fga	pct	ft-fa	pct	off	def	tot	avg	pf	fo	ast	to	blk	stl	pts	avg
2015-16	30-28	699/23.3	74-148	.500	0-0	.000	48-63	.762	50	95	145	4.8	49	2	16	34	11	11	196	6.5
2016-17	3-3	75/25.0	12-21	.571	0-0	.000	13-20	.650	4	10	14	4.7	4	0	3	5	6	1	37	12.3
TOTAL	33-31	774/23.5	86-169	.509	0-0	.000	61-83	.735	54	105	159	4.8	53	2	19	39	17	12	233	7.1

42

NOTES

- Missed start of season with injury



YASMEEN RATLIFF
C | FR | 6-5 | ALPHARETTA, GA.

16-17 HIGHS

- Points
- FGM
- FGA
- 3PM
- 3PA
- FTM
- FTA
- OREB
- DREB
- REB
- AST
- BLK
- STL
- MIN

*Most Recent

CAREER HIGHS

- Points
- FGM
- FGA
- 3PM
- 3PA
- FTM
- FTA
- OREB
- DREB
- REB
- AST
- BLK
- STL
- MIN

*Most Recent

MISCELLANEOUS

	2016-17	Career
10+ Pts	-	-
15+ Pts	-	-
20+ Pts	-	-
10+ Rebs	-	-
15+ Rebs	-	-
Double-Double	-	-
5+ Ast	-	-
Led AR in Pts	-	-
Led AR in Reb	-	-
GP/GS	-	-

HONORS

- TBA

16-17 GAME BY GAME

RATLIFF'S CAREER STATISTICS